

W. P. Carey School of Business

Access, excellence and innovation in business knowledge

ASU's W. P. Carey School of Business welcomes diversity and encourages global thinking. With nearly 20,000 degree-seeking students, it's one of the largest business schools in the U.S. The School has been accredited by the Association to Advance Collegiate Schools of Business (AACSB) for more than 60 years.

**22 disciplines ranked Top 25
by U.S. News & World Report
in 2024, including:**

Undergraduate programs

#8 Business Analytics
#10 Management Info Systems
#18 International Business
#23 Business

Graduate specialties

#3 Supply Chain and Logistics
#6 Information Systems
#9 Project Management
#14 Business Analytics

Available degrees when you apply with Kaplan International:

Undergraduate

Accountancy, BS

Agribusiness Innovation and Technology, BA **NEW!**

Business and Technology Solutions, BA **NEW!**

Business, BA

With concentrations in: Business Administration; Communication; Financial Planning; Food Industry Management; Global Agribusiness; Global Logistics Management; Global Politics; Health Care; Human Resources; Information Security; Language and Culture; Law; Public Service and Public Policy; Sports Business; Statistics ♦; Sustainability; Technology; Tourism

Business Data Analytics, BS ♦

Business Entrepreneurship, BS

Computer Information Systems, BS ♦

Economics, BS ♦

Entrepreneurial Leadership, BA **NEW!**

Finance, BS

Management, BS

Marketing, BS

With concentrations in: Digital and Integrated Marketing Communications; Professional Sales

Supply Chain Management, BS

Undecided—Business Exploratory

Graduate

Accountancy and Data Analytics, MAccDA ♦

Artificial Intelligence in Business, MS ♦ **NEW!**

Business Administration, MBA ♦

With concentrations in: Business Analytics; Consulting; Entrepreneurship; Finance; Information Systems Management; Marketing; Supply Chain Management

Business Analytics, MS ♦

Entrepreneurship and Innovation, MS ♦ **NEW!**

Finance, MS ♦

Information Systems Management, MS ♦

Innovation and Venture Development, MS ♦

Real Estate Development, MREDev

Supply Chain Management, MS ♦ **NEW!**

Taxation and Data Analytics, MTaxDA

♦ STEM-classified degree: graduates are eligible for an additional 24 months of Optional Practical Training (OPT) in the USA.

Discover the degrees you can earn at Arizona State University:

admission.asu.edu/kaplan/degrees

In partnership with

KAPLAN INTERNATIONAL

Undergraduate degree key facts:

	Polytechnic or West Valley campus	Tempe campus	ASU at Lake Havasu
Program highlights:	Accountancy; Applied Business and Technology Solutions; Agribusiness Innovation and Technology; Business Administration; Entrepreneurial Leadership; Global Logistics Management; Information Security; Management; Statistics	Accountancy; Business Data Analytics; Business Entrepreneurship; Computer Information Systems; Economics; Finance; Global Politics; Marketing; Supply Chain Management	Business Administration; Communication
Intakes	January, May and August	January, May and August	January and August
Tuition and Undergraduate College fee (per year)	\$37,370	\$37,370	\$13,604
Financial guarantee amount (for I-20)	\$64,204	\$64,204	\$37,872
Merit scholarships for first-year admission	up to \$18,500	up to \$14,500	up to \$4,800
Merit scholarships for transfer admission	up to \$14,000	up to \$10,000	Not available

Admission to a bachelor's degree program:

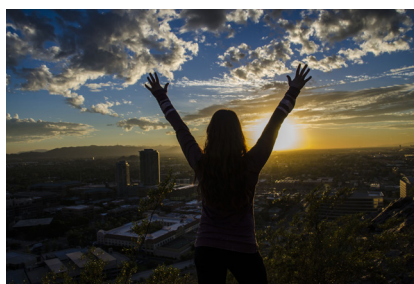
- Bachelor of Art majors: minimum GPA 3.00 (4.00='A') OR top 25% of secondary school graduating class.
- Bachelor of Science majors: GPA 3.40 OR top 8% of secondary school graduating class OR a qualifying SAT/ACT score.
- English test score minimum: IELTS 6.0 / TOEFL/KiBT 61 / DET 95 / PTE 53.

Transfer admission into year 2 or 3 of a degree program:

- 24+ undergraduate credits with minimum GPA 3.00; English requirement is the same as freshman admission.

Academic pathway admission:

- Suitable for lower GPAs; IELTS 5.5 / TOEFL/KiBT 55 / DET 90 / PTE 39.



Graduate degree key facts:

	Supply Chain Mgm, MS	MBA	Business Analytics, MA	Other programs
Credits	30	60	30-43	30-43
Duration	9 months	21 months	9 or 16 months	9, 12 or 16 months
Intake	August	August	January and August	August
Tuition and program fee (full program)	\$61,026	\$107,923	\$62,226	\$53,962-\$65,924
Campus	West	Tempe	Tempe	Tempe
Financial guarantee amount (for I-20)	\$87,783	\$78,783	\$87,783	\$78,783-\$87,783
Merit scholarships	up to \$5,000	up to \$5,000	up to \$5,000	up to \$5,000

Admission to a master's program:

- Equivalent of a US bachelor's degree from an accredited university with a minimum GPA 3.00 on a 4.00 scale. Admitted MBA students have an average GPA of 3.63.
- English test score minimum: IELTS 6.5 (no band below 6); TOEFL 80 (no band below 20); DET 115.
- Each program has additional requirements which may include (but are not limited to): official GMAT/GRE score, résumé, letters of recommendation, essay question and admission interview(s).

Published April 2024

List of top recruiters:

- ADP
- Amazon
- Bank of America
- Cisco Systems
- Dell
- Deloitte
- The Goldman Sachs Group
- Honeywell International
- Intel
- J.P. Morgan
- KPMG
- Microsoft
- Morgan Stanley
- PepsiCo
- Starbucks

**Learn more
about master's
degrees at
W. P. Carey
School of Business**



#2

Highest ROI (return on investment) in the U.S. after full-time MBA program
U.S. News 2023

100,000+

W. P. Carey alumni worldwide

\$124,664

Mean salary for W. P. Carey full-time MBA graduates
Class of 2022

Apply with Kaplan to get an application fee waiver, guidance through the admission process and support with pre-arrival arrangements:
admission.asu.edu/kaplan/asu-apply

In partnership with

KAPLAN INTERNATIONAL