

KAPLAN

INTERNATIONAL
PATHWAYS

Study abroad in the UK this year!

Start your pathway course
between February and May,
and progress to university in
Autumn 2025



Check out live availability
and special offers for
accommodation!

●●● [kaplanpathways.com](https://www.kaplanpathways.com) ●●●

Undergraduate pathway courses

Foundation Certificate **F**

For entry to the 1st year of an undergraduate degree in England (or 2nd year in Scotland).

International Year One **I**

For fast-track entry to the 2nd year of an undergraduate degree at selected universities in England.

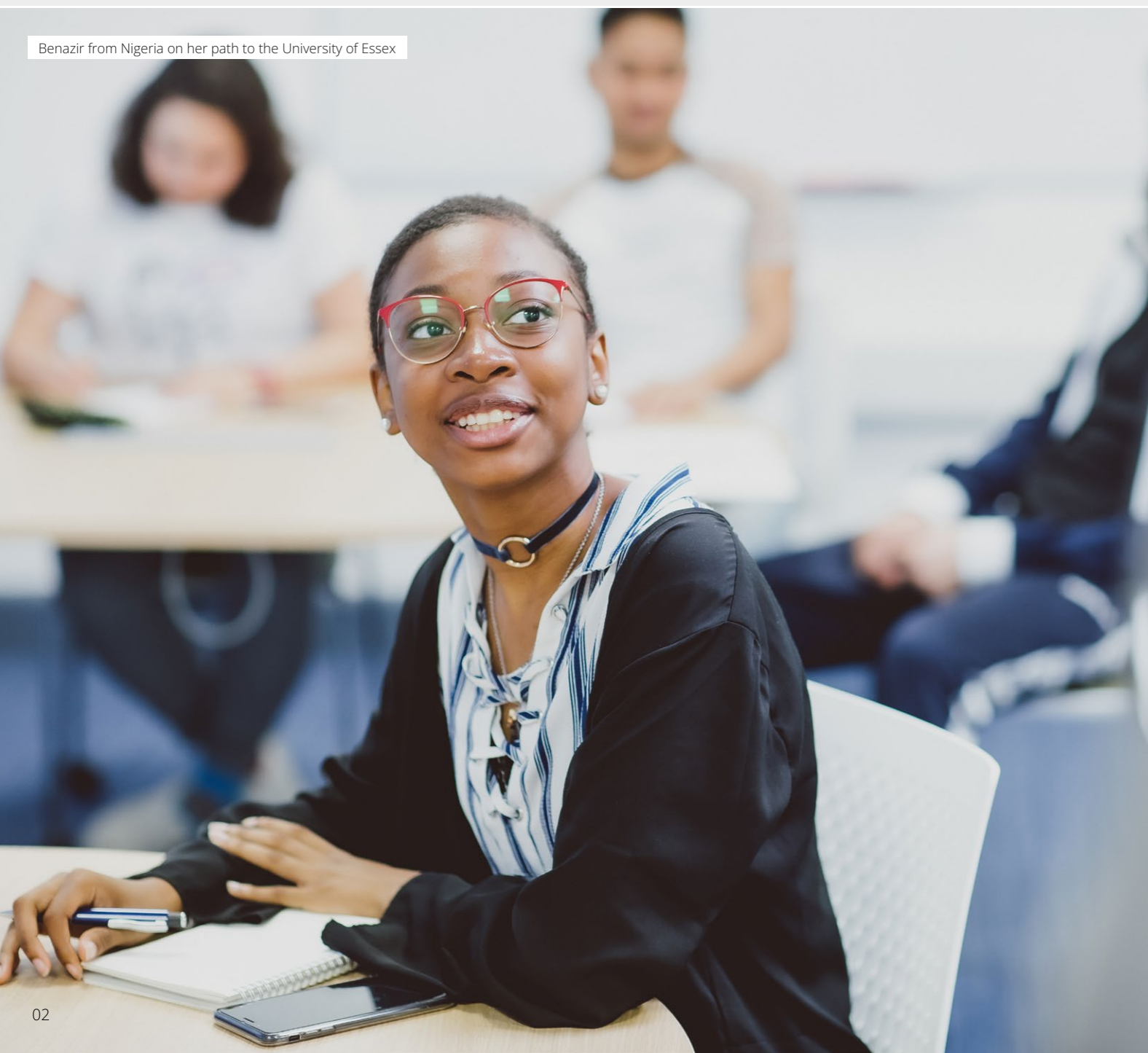
A course that fits

We offer multiple course types to fit different students, all leading to a degree in Autumn 2025.

Course type	Label	Details	Course length	Typical English language entry level (UKVI IELTS or accepted equivalent)
Intensive 2-terms	(I)	Shorter course for students with a higher IELTS level	4 months to just under 7 months	F 5.5 overall with at least 4.5 in all skills I 5.5 overall with at least 5.0 in all skills
Extended English and Skills (typically 2.5 terms)	(EES)	Additional Extended English and Skills modules to improve English language and academic skills (note: this is also an intensive course)	Just over 6 months	F 5.0 overall with at least 4.0 in all skills

Accepted English tests: recognised equivalents to UKVI IELTS may depend on one or more of course level, college and learning mode. For more information, visit: kaplanpathways.com/uk/ielts/
Flexible visa options for students: for pathway courses that are 6 months long or less, even if students study in the UK, they don't necessarily need a Student visa. Instead, they can choose to study with Standard Visitor permission, which some nationalities can apply for on arrival. Please check any travel and arrival requirements for both the Student visa and Standard Visitor permission for each of your students, so that they know what to expect before coming to the UK.

Benazir from Nigeria on her path to the University of Essex



College	Enrolment dates	Course	Subject	Tuition fees	Leading to
Bournemouth University International College	24 February to 17 March 2025	F	Business, Law or Finance (I) Events, Tourism and Hospitality Management (I) Media and Communications (I)	£15,660	Bournemouth University Another UK university via the Multi-Progression Pathway (MPP)
			Computing (I) Science (I)	£16,440	
Kaplan International College London	24 February to 17 March 2025	F	Business, Law and Social Sciences (I) (EES)	£21,880 – £24,540	City, University of London Queen Mary University of London TEDI-London University of Birmingham University of Bristol University of Westminster University of York
			Science and Engineering (I) (EES)	£23,340 – £25,140	
	22 to 30 April 2025	F	Business, Law and Social Sciences (I) Science and Engineering (I)	£21,880 £23,340	
Nottingham Trent International College	24 February to 17 March 2025	F	Art, Design and Media (I)	£17,990	Nottingham Trent University
			Business, Law and Social Sciences (I) (EES) Computing (I) Science and Engineering (I)	£15,740 – £17,070 £16,650	
	22 to 30 April 2025	I	Business (I)	£15,910	
	F	Business, Law and Social Sciences (I)	£15,740		
University of Essex International College	24 February to 17 March 2025	F	Humanities (I) Social Sciences (I)	£19,400	University of Essex
University of Liverpool International College	24 February to 17 March 2025	F	Business, Law and Social Sciences ¹ (I) (EES)	£21,160 – £22,710	University of Liverpool
			Science and Engineering ² (I) (EES)	£22,630 – £24,480	
	22 to 30 April 2025	F	Business, Law and Social Sciences ¹ (I) Science and Engineering ² (I)	£21,160 £22,630	
University of Nottingham International College	24 February to 17 March 2025	F	Business, Law and Social Sciences (I) Science and Engineering (I)	£21,690 £23,800	University of Nottingham
			22 to 30 April 2025	F	
	UWE Bristol's International College	24 February to 17 March 2025	F	Business, Law and Social Sciences (I) (EES) Science and Engineering (I) (EES)	
22 to 30 April 2025				F	Business, Law and Social Sciences (I) Science and Engineering ² (I)
Kaplan International Pathways: digital courses		17 February to 10 March 2025	F	Business, Law and Social Sciences (I) Science and Engineering (I)	£15,600

1: Students cannot progress onto an Architecture degree from this course.

2: Students cannot progress onto a Health Sciences degree from this course.

IELTS scores stated in course descriptions are the typical entry requirement – in certain cases, a different English level might be required.



Accommodation

You'll need a home away from home when you study abroad in the UK. With Kaplan Living, we've got you covered!

Postgraduate pathway courses

Pre-Master's ^M

For entry to a postgraduate degree in England or Scotland.

Pre-Doctorate ^D

To help you apply for a doctoral degree in England or Scotland.

A course that fits

We offer multiple course types to fit different students, all leading to a degree in Autumn 2025.

Course type	Label	Details	Course length	Typical English language entry level (UKVI IELTS or accepted equivalent)
Intensive 2-terms	(I)	Shorter course for students with a higher IELTS level	From 4 to just under 6 months	^M 5.5 overall with at least 5.0 in all skills (5.5 in all skills for the University of Nottingham International College)
Preparation	(P)	Preparation course for doctoral degree applications	6 months	^D 5.5 overall with at least 5.5 in all skills
Extended English and Skills (typically 2.5 terms)	(EES)	Additional Extended English and Skills modules to improve English language and academic skills (note: this is also an intensive course)	6 months	^M 5.0 overall with at least 5.0 in all skills

Accepted English tests: recognised equivalents to UKVI IELTS may depend on one or more of course level, college and learning mode. For more information, visit: kaplanpathways.com/uk/ielts/

Flexible visa options for students: for pathway courses that are 6 months long or less, even if students study in the UK, they don't necessarily need a Student visa. Instead, they can choose to study with Standard Visitor permission, which some nationalities can apply for on arrival. Please check any travel and arrival requirements for both the Student visa and Standard Visitor permission for each of your students, so that they know what to expect before coming to the UK.

Students on their path to Bournemouth University



College	Enrolment dates	Course	Subject	Tuition fees	Leading to
Bournemouth University International College	24 February to 17 March 2025	^M	Business, Law or Finance (I) Events, Tourism and Hospitality Management (I) Media and Communications (I)	£16,570	Bournemouth University
			Business, Economics and Finance (I)	£28,000	
Glasgow International College	24 February to 17 March 2025	^M	Law and Social Sciences (I)	£26,120	University of Glasgow
			Medical, Veterinary and Life Sciences (I)	£28,650	
			Science and Engineering (I)	£27,260	
Kaplan International College London	24 February to 17 March 2025	^M	Business, Economics and Finance (I) Law and Social Sciences (I)	£23,310	City, University of London Cranfield University Queen Mary University of London University of Birmingham ³ University of Westminster University of York
			Science and Engineering (I)	£23,930	
	3 to 24 February 2025	^D	Pre-Doctorate	£9,080	
			Pre-Doctorate	£5,900	
University of Brighton International College	24 February to 17 March 2025	^M	Business, Law and Social Sciences (I)	£16,180	University of Brighton
University of Essex International College	24 February to 17 March 2025	^M	Humanities (I) Social Sciences (I)	£21,310	University of Essex
			Business, Economics and Finance (EES)	£29,160	
University of Liverpool International College	24 February to 17 March 2025	^M	Law and Social Sciences (EES)	£26,250	University of Liverpool
			Science and Engineering (EES)	£27,960	
	22 April to 30 April 2025	^M	Business, Economics and Finance (I)	£24,000	
			Law and Social Sciences (I)	£23,020	
University of Nottingham International College	24 February to 17 March 2025	^M	Science and Engineering (I)	£24,540	University of Nottingham
			Business and Management (I)	£24,990	
		^D	Law and Social Sciences (I)	£23,850	
			Pre-Doctorate	£25,980	
Kaplan International Pathways: digital courses	17 February to 10 March 2025	^M	Business, Economics and Finance (I) Law and Social Sciences (I) Science and Engineering (I)	£15,600	City, University of London Cranfield University Nottingham Trent University ⁴ Queen Mary University of London ⁴ University of Birmingham University of Brighton University of Essex University of Liverpool University of Nottingham University of Westminster University of York UWE Bristol

³: Progression to postgraduate degrees at University of Birmingham from KIC London is via the Pre-Master's for Business, Economics and Finance or Pre-Master's for Law and Social Sciences only.

⁴: Progression to postgraduate degrees at Queen Mary University of London from digital pathway courses is via the Pre-Master's for Business, Economics and Finance or Pre-Master's for Law and Social Sciences only.

IELTS scores stated in course descriptions are the typical entry requirement – in certain cases, a different English level might be required.



Accommodation

You'll need a home away from home when you study abroad in the UK. With Kaplan Living, we've got you covered!



Find out more

Scan the QR code to contact us about our February–May intakes. Or, get in touch with your Market Manager to learn more.

Contact us

▶ kaplanpathways.com/uk-contact

☎ +44 (0)20 7045 4925

@ pathways@kaplan.com

Social media

Search "KaplanPathways" on: [!\[\]\(a870788d6ed9b8fd294b7654a8c8526b_img.jpg\)](#) [!\[\]\(18065afa4ef6662bca9f3f6088f7de30_img.jpg\)](#) [!\[\]\(b985170eefb48b9b3ef593e79310e8f5_img.jpg\)](#) [!\[\]\(65defa7fe6c24be84c2514c965593962_img.jpg\)](#) [!\[\]\(fcdd23ff0d6d447f60ed83fa544a6d33_img.jpg\)](#) [!\[\]\(702f22e7ad1b700defb72bcd0f4a3dad_img.jpg\)](#)

Who is on the cover?

Mei Bao from Malaysia, Stephanie from India and Sungwook from South Korea on their path to the University of Brighton.

Important information

Information in this course guide is correct at the time of publication and is subject to change.

Published January 2025 [v01]

Shape
your future.
Shape
the world.