

TEDI LONDON
The Engineering
& Design Institute

Engineered by:

- Arizona State University
- King's College London
- UNSW Sydney

INTERNATIONAL ADMISSION GUIDE



“From day one you start doing hands-on projects. You have the community feel of learning together with supportive tutors at hand. The mix of hands-on and online learning gives you a great building block of understanding engineering as a whole, and in the Makerspaces you’ve got everything at your disposal to bring projects to life.”

Rozanne Goonewardene
BEng Global Design Engineering student

THE ENGINEERING & DESIGN INSTITUTE LONDON: TEDI-LONDON

TEDI LONDON
The Engineering
& Design Institute

In partnership with

KAPLAN INTERNATIONAL
PATHWAYS



FOR THE ENGINEERS OF THE FUTURE

“Welcome to TEDI-London. A place to not only learn, but to dream, tinker, and turn wild ideas into reality.

It’s an extraordinary privilege to lead an institution that is redefining the landscape of engineering education, supporting creative, diverse, and sustainable solutions for the challenges of our time. Together we’ll engineer the future and push the boundaries of what’s possible to leave the world a better, fairer place.

We’re delighted to partner with Kaplan International Pathways to bring TEDI-London to a global student audience. Let the engineering revolution continue!”

Professor Lisa Brodie
Executive Dean
TEDI-London

OUR FOUNDING PARTNERS

The Engineering & Design Institute London (TEDI-London) is the result of a unique vision that is shared by founders Arizona State University (ASU), King's College London and UNSW Sydney to create a place of learning where the engineers of the future can come together.

Best of both worlds

When you study TEDI-London's innovative Global Design Engineering degree, you'll benefit from the input and expertise of these big international universities, while studying on a small and friendly campus where your tutors and fellow students all know your name.

Globally responsible engineering

Throughout your degree at TEDI-London, you'll take a global perspective. Working in teams on projects, you'll even have the opportunity to collaborate with industry professionals, and find solutions to real-world problems.



CREATIVE SPIRIT

You'll have opportunities to build your creativity while you're at TEDI-London. The Institute collaborates closely with ASU, who have funded hundreds of start-ups and been granted thousands of patents. That's why they've been ranked #1 in the USA for innovation for nine years in a row (U.S. News & World Report 2016-2024).



ACADEMIC EXCELLENCE

King's College London is renowned for its academic excellence – in fact, it's ranked #6 in the UK overall (Times Higher Education World University Rankings 2024). It has a great central London location and you'll have access to its academic and social facilities and international student community during your degree.



WORLD-LEADING RESEARCH

The University of New South Wales (UNSW Sydney) is ranked #1 in Australia for Engineering and Technology (QS World University Rankings by Subject 2023). During your studies at TEDI-London, you'll have the opportunity to benefit from their expertise and world-leading research in the Engineering field.



A NEW TYPE OF ENGINEER

Tomorrow's challenges won't be solved by yesterday's thinking. The great issues of the 21st Century will be answered by a new type of engineer. Globally focused, socially aware and from diverse backgrounds, the engineers of the future will work together to solve problems and improve lives. TEDI-London will train and inspire these engineers.

If you've these qualities and share our values of **inclusiveness, courage, inspiration, collaboration and integrity**, you'll find this is an engineering degree like no other.

Founding the future

TEDI-London is the brainchild of three leading names in global engineering education. Arizona State University, King's College London and UNSW Sydney were already working together to tackle global problems as part of the PLuS Alliance when they saw need for more diverse, creative-thinking engineering students. That's why they created TEDI-London.

These founders have given TEDI-London the best possible start in life. Dating back to 1828, King's College London is one of the world's top 40 universities (Times Higher Education 2024). Arizona State University ranks ahead of MIT and Stanford for innovation in education (U.S. News Best Colleges 2024). Indeed, it's a world leader in advancing the UN's sustainability goals around poverty, clean water, energy and gender equality. And UNSW Sydney is a top 20 university worldwide according to the QS Rankings 2024.

Why are our students unique?

From different backgrounds and with diverse experiences, our engineers all look at familiar problems in fresh ways and all want to make a difference.

As such, you could have studied any subject and come from any academic background. What we look for in every application is a combination of Attitude, Aptitude and Ability. It's about more than technical brilliance. It's also about your initiative and what motivates you.

Many of our projects support the UN's Sustainable Development Goals: good health and well-being, affordable and clean energy, climate action and sustainable communities. Sharing these values makes our students different, too.

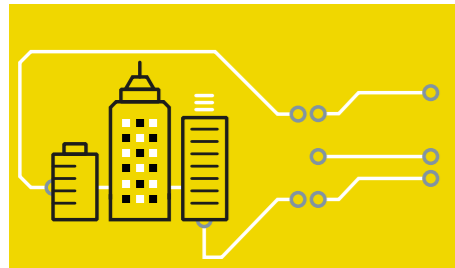
"You should consider TEDI-London if you are passionate and curious about engineering. TEDI-London naturally motivates you to explore topics that you normally would not have encountered, and the learning experience will push you further than you ever thought you could go!"

Sebastian
BEng Global Design Engineering student



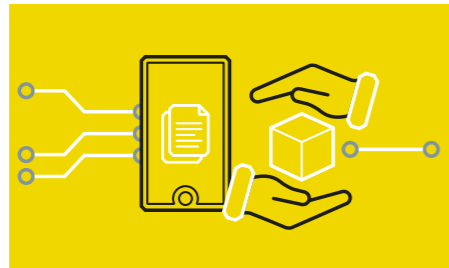
WHAT MAKES TEDI-LONDON DIFFERENT?

We're pushing the boundaries of engineering education. Forget the traditional idea of listening to lectures. Our engineering students learn by doing and exploring – by working together to solve problems and building their skills through workshops, masterclasses and digital sessions designed around them.



Making is the difference

At the heart of our engineering courses are real-world challenges, co-designed by industry leaders. These cover today's hottest topics. Think smart cities, robotics and sustainability. You'll build your engineering knowledge, business know-how and team skills by solving these problems. On each project, you'll gain the satisfaction of applying engineering thinking to make something that moves the world on. That's an unforgettable feeling.



Supported by experts from across engineering disciplines

You will learn from a diverse mix of academic and industry experts. The TEDI-London Teaching and Learning team comprise Chartered Engineers from the Institution of Engineering and Technology (IET), The Institution of Engineering Designers (IED), The Institution of Mechanical Engineers (IMechE), The Institution of Civil Engineers (ICE) and The Institution of Structural Engineers (IStructE). TEDI-London is an affiliate organisation of the IET so, upon enrolment, you can begin your journey to Chartered Engineer from day one.



A new approach to admissions

Traditionally, students need A-level Maths or Physics to study an engineering degree. We're rethinking all the traditions in engineering education, including that one. We look beyond academic qualifications, recognising that it takes many qualities to make a good engineering student and that people study at different points in their lives.

OUR DEGREES AT A GLANCE

DEGREE QUALIFICATION

- Bachelor of Engineering (BEng) with Honours
- Integrated Master of Engineering (MEng) with Honours

LEARNING MODE AND LOCATION

- On campus at TEDI-London in Canada Water, London, UK

COURSE DURATION

- 3 years (BEng) / 4 years (MEng)

STUDY TYPE, INTAKES AND STRUCTURE

- Full-time; intakes in September and January
- Each year is taught in three 10-week blocks; first block has a study skills week in year one and an employability week in year two

TUITION FEES

- International students: £24,500 GBP per year (2024-25 academic year)

SCHOLARSHIPS

- These are available for tuition in some cases; see the financial support page later in this prospectus for more information.

DEGREE CONTENT

You'll complete all the following modules:

YEAR ONE

- Introduction to Engineering Design
- Reverse Engineering for Design
- Prototyping
- Modelling & Simulation in Engineering Design
- Designing for Smart Cities 1
- Applied Professional Skills and Portfolio

YEAR TWO

- Design for Manufacture
- User-centred Product Design
- Designing for Smart Cities 2
- Ecological Design
- The Living Lab
- Advanced Professional Skills and Portfolio

YEAR THREE

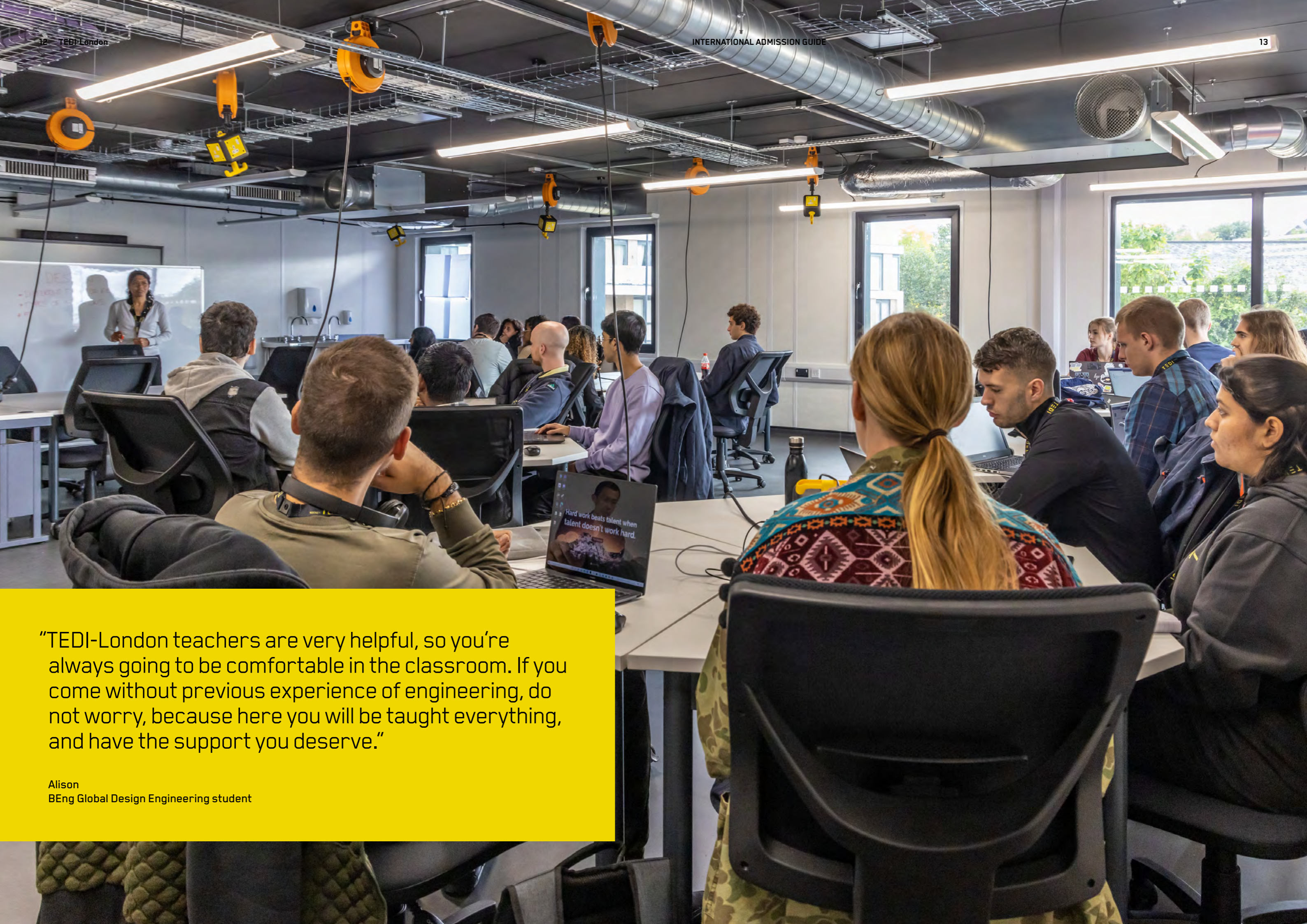
- Advanced Engineering for Design
- Innovation & Entrepreneurship in Design
- Global Design Engineering Individual Project
- Professional and Personal Portfolio

YEAR FOUR (MENG)

- User-centred Global Design
- Global Engineering Design Masters Individual Project
- Professional, Personal and Leadership Portfolio

PATHWAY COURSE WITH KAPLAN, LEADING TO A TEDI-LONDON DEGREE

To further widen access to TEDI-London's degrees, online pathway courses are available with Kaplan. These are ideal for students who don't meet degree entry requirements and need extra preparation for undergraduate study. Learn more on the 'Applying to TEDI-London' page later in this prospectus.



“TEDI-London teachers are very helpful, so you’re always going to be comfortable in the classroom. If you come without previous experience of engineering, do not worry, because here you will be taught everything, and have the support you deserve.”

Alison
BEng Global Design Engineering student

PUTTING PROJECTS IN THE SPOTLIGHT

All the projects you'll tackle in our Makerspaces throughout your studies will begin with real-life problems.



Our Makerspaces bring together ideas from science labs, machine workshops, art studios and community space to create an environment where students can experiment and learn imaginatively and safely.

Makerspaces are split between 'fabrication' and 'mechatronics.'

Fabrication includes both making things - prototyping, modelling - and breaking things - taking products apart to see how they work and then designing them better!

Our equipment includes manual (milling machines, drills, lathes) and computer-controlled production (CNC mills, 3D printers, laser cutters) as well as a universal testing machine for exploring the properties of materials and structures.

For mechatronics work, we have multimeters, oscilloscopes, spectrum analysers, soldering irons and development boards with a variety of microcontrollers, components and peripherals. This means you will be able to diagnose, fault-find, build sensors and control systems, programme actuators, robots and more.

This is all to develop the key skills you will need to be a Design Engineer:

- **Creative problem solving:** All TEDI-London projects, devised with industrial partners, involve reverse engineering, fault finding, prototyping and user-centred design. You will be actively solving problems from day one - just like in the workplace.
- **Ability to cope with setbacks and learning to learn:** Prototyping is a crucial part of learning how and why designs can fail. Our Makerspaces allow small-scale, low-cost versions to be tested and improved iteratively. The larger machines allow design to be taken beyond the prototyping stage but take practice, patience, mistakes and knowledge to use successfully.
- **Taking individual responsibility and operating safely together in a work-type setting:** Makerspaces are deliberately designed to show students how employers and employees work in the face of real industrial, construction and commercial risks.

WORKING WITH INDUSTRY

There are no 'ivory towers' at TEDI-London. We're shaped by the real world. As well as tackling 'live' projects, you'll learn from industry mentors with years of practical engineering experience. They'll work with our tutors to help you develop.

This means our engineers gain experience of working with multiple employers. So you'll build up a broad portfolio of real-world projects, which you can discuss at interviews. It will make standing out in the job market that much easier.

As well as gaining broad sector experience, you'll have the opportunity to complete a placement in a semester of your final year. Here, you could spend time on site with an industry partner helping them with a key challenge.





APPLYING TO TEDI-LONDON

We're pleased to partner with Kaplan Pathways to take applications from international students around the world.

The following criteria act as a guide to help you decide if TEDI-London is right for you, but please remember that we assess every application individually.

Academic entry requirements

- For A Levels / IB / BTEC / post-16 education, you'll be on track for around 112-120 UCAS points (BBB-BBC) or equivalent
- Visit kaplanpathways.com/tedi-london-degrees for information about other international qualifications

Maths requirement

- If studying A Level Maths (or equivalent), you should be on track to achieve a grade C or above
- Alternatively, you can meet this requirement by taking TEDI-London's maths refresher programme (12 hours online + short assessment)

English language requirement

- UKVI IELTS 6.0 overall with at least 6.0 in writing and at least 5.5 in all other skills, unless you are exempt

Online interview

- Offer holders will be invited to an online interview to discuss their skill set, educational background and reasons for studying engineering. If successful, students will progress to the next stage.

If you're ready to apply, or are unsure if you qualify, our expert admissions partner, Kaplan, is here to help. Their admissions advisors can answer your questions, and Kaplan has regional experts in several countries. We especially welcome applicants from groups that are under-represented at universities or in engineering.

Apply: kaplanpathways.com/tedi-london-apply
Contact: kaplanpathways.com/tedi-london-contact

APPLICATION PROCESS: STEP-BY-STEP GUIDE

1) Apply to TEDI-London via Kaplan Pathways

2) Application review by Kaplan and TEDI-London. If successful, you'll receive a conditional offer to study at TEDI-London.

3) Attend and pass TEDI-London online interview

4) Complete a maths refresher course if needed

5) Confirmation of place at TEDI-London once all conditions of your offer have been met

DON'T MEET DEGREE ENTRY REQUIREMENTS?

You can take a Foundation Certificate online with Kaplan Pathways. Improve your academic skills, subject knowledge and English language level to gain entry to a TEDI-London degree, and benefit from Kaplan's expert support.

- Course length: 6 to 15 months (2 to 5 terms)
- Intakes throughout the year, leading to a degree from 2025 onwards
- Tuition fees starting from £15,600 GBP
- For students with UKVI IELTS 4.0 to 5.5 or accepted equivalent
- For academic entry requirements, visit: kaplanpathways.com/tedi-london-degrees

FRESH THINKING AT CANADA WATER

Canada Water is a special place

With a wildlife reserve and freshwater lake, the Rotherhithe neighbourhood has long had its own Docklands character. Yet it's only two stops from famous London Bridge and all the sights and sounds of one of the world's greatest cities: London. As a place to study in the Capital, there is nowhere quite like it.

A purpose-built campus, purposefully different

The TEDI-London Campus has become one of the area's landmarks. It combines sustainable development with a unique modular design. It houses three makerspaces for students: places to come together to conceive, create and collaborate. From small prototyping and 3D printing through to large-scale equipment, you'll have everything you need to develop your ideas and grow your skills.

Meanwhile, the remaining spaces are for the other sides of student life. There's a double height cafeteria, event and exhibition space, conference and teaching rooms, plus places to socialise, worship, or reflect. All of which are skirted with outdoor terraces with striking views over the local area.



STUDENT LIFE AT TEDI- LONDON

Getting to the campus is straightforward

If you're cycling, there's an outdoor store for your bike, plus showers, lockers and changing rooms. And with Canada Water station less than 10 minutes' walk away, travelling from anywhere in London is simple. Equally, when it's time to relax, the city's bright lights are within easy reach.

Living and learning

At TEDI-London, we don't have our own accommodation. But the campus's excellent travel links mean you don't have to live locally and can look further afield. We also have strong relationships with well-respected providers of student accommodation. So we'll be able to help, whether you are looking for a room in halls, private student housing, a flat or house share. The TEDI-London website has details of these providers and our Student Hub team can give you more advice on your choices: studenthub@tedi-london.ac.uk

London's largest student community

We know student life isn't just about your course. That's why we've arranged for the Students' Union at King's College London (KCLSU) to offer our students associate membership. This means you'll be able to join one of the biggest student communities in London. As such, you'll be able to join a wide range of over 300 KCLSU clubs and societies: for sports, hobbies, and networking. Plus, you'll have access to their study and social spaces, bars, cafés, libraries and information services (hubs).

GETTING THE RIGHT FINANCIAL SUPPORT

Scholarships

We offer a range of scholarships, and we're especially interested in supporting learners from backgrounds that are traditionally under represented on courses in engineering. Scholarships are awarded based on performance at the interview stage.

To find out more, contact Kaplan Pathways:
kaplanpathways.com/tedi-london-contact

TEDI-LONDON DEGREE SCHOLARSHIPS AVAILABLE FOR APPLICANTS VIA KAPLAN

- Scholarships of up to 50% of degree tuition fees are available, based on performance at interview stage
- These are renewed annually for the full duration of the 3 or 4-year degree



FOR FURTHER DETAILS AND TO APPLY,
VISIT THE KAPLAN PATHWAYS WEBSITE:
[KAPLANPATHWAYS.COM/TEDI-LONDON](https://www.kaplanpathways.com/tedi-london)

INFORMATION CORRECT AS OF 02/24

TEDI LONDON
The Engineering
& Design Institute

Engineered by:

— Arizona State University
— King's College London
— UNSW Sydney

TEDI-LONDON HAS NEW DEGREE-AWARDING POWERS FROM THE OFFICE FOR STUDENTS (OFS)